

# Installation

## POSITIVE SHUT OFF

Models: BL60•BL100•BL148



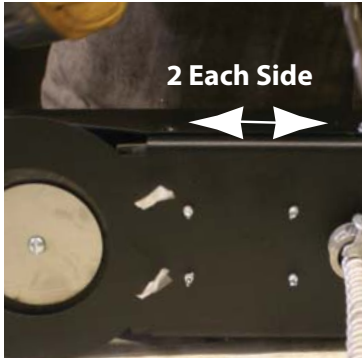
ROYALL



# INSTALLATION PLACEMENT

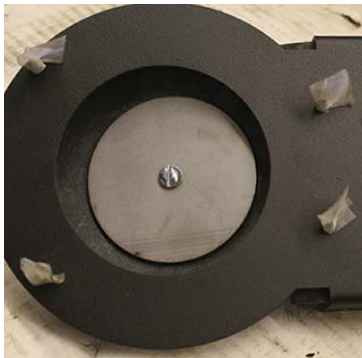
## Required Tools:

1. 1- 1/4" Mag. Driver
2. 1- 5/16" Mag. Driver
3. 1-Phillips Screw Driver
4. Cordless Drill



### Step 1

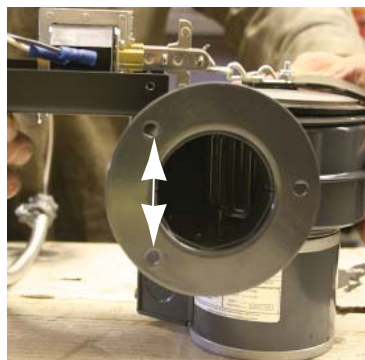
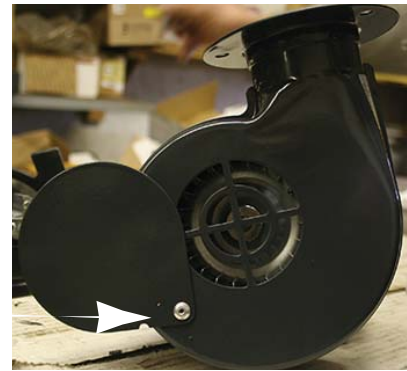
Using 1/4" Mag driver remove four #8 screws from positive shut off cover.



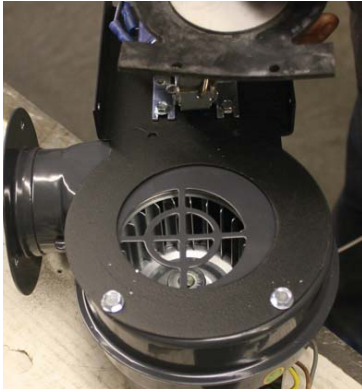
### Step 2

Remove the four 5/16" self tapping screws that are taped in place.

**NOTE** 50 cfm Blower's remove the damper plate and rivet from blower. Be sure to remove drilled out rivet from inside squirrel cage. This can be done by using one of the 5/16 self drilling screws.

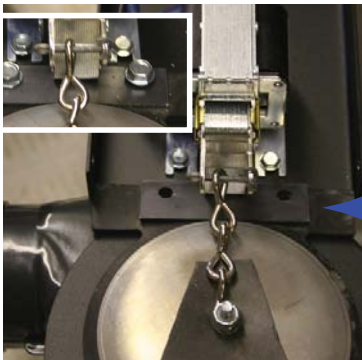


**NOTE** When mounting positive shut off locate solenoid end on the same side of blower as two drilled holes in flange.



### Step 3

Center mounting plate so all the four self drillins screws will be secured to blower housing with out interferring with the squirll cage (fasten outer fasteners first).



### Step 5

Place rubber flap assembly onto mounting plate. Place metal flap plate over rubber flap assembly and fasten to blower housing. Cover now can be put back on Assembly.

### Step 6

Metal Flap Plate



### Step 7

BX wire should be cut to fit electrical box.

#### NOTE

When running electrical wire keep it away from front of unit to prevent wire from getting over heated.

#### NOTE

See installation instructions for mounting to boiler.